

6 AIRCRAFT MAINTENANCE SQUADRON



MISSION

The 6 AMXS provides on-equipment maintenance to include launch, recovery, servicing, inspection and repair of 16 assigned KC-135R/T aircraft. They support annual flying schedule of over 2,800 sorties and 11,000 flying hours. They mobilize and deploy personnel and equipment in support of worldwide aerial refueling, airlift, and aero medical evacuation operations.

LINEAGE

6 Periodic Maintenance Squadron constituted, 4 Jun 1952
Activated, 16 Jun 1952
Redesignated 6 Organizational Maintenance Squadron, 1 Apr 1959
Discontinued and inactivated, 25 Mar 1967
Redesignated 6 Aircraft Generation Squadron, 1 Jul 1996
Activated, 1 Oct 1996
Redesignated 6 Aircraft Maintenance Squadron, 1 Oct 2002

STATIONS

Walker AFB, NM, 16 Jun 1952-25 Mar 1967
MacDill AFB, FL, 1 Oct 1996

DEPLOYED STATIONS

Andersen AFB, Guam, 31 Oct 1955-26 Jan 1956

ASSIGNMENTS

6 Bombardment (later, 6 Strategic Aerospace; 6 Strategic) Wing, 16 Jun 1952-25 Mar 1967

6 Logistics Group [later 6 Maintenance Group], 1 Oct 1996

COMMANDERS

Maj Roy F. Claytor, #1954

HONORS

Service Streamers

Campaign Streamers

Armed Forces Expeditionary Streamers

Decorations

Air Force Outstanding Unit Awards

1 May 1960-31 May 1962

[1 Oct] 1996-30 Jun 1998

1 Jul 1998-30 Jun 2000

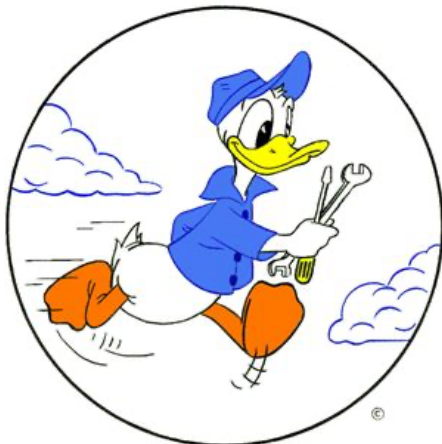
1 Jul 2004-30 Jun 2006

1 Jul 2007-30 Jun 2009

1 Jul 2009 – 30 Jun 2010

1 Jul 2013 – 30 Jun 2014

EMBLEM



On a disc white, edged Black, “Donald Duck” in his natural colors, wearing a medium blue billed cap and jacket, outlines, buttons, and detail Deep Blue, taking a swinging stride – wrench and screwdriver in hand, White with Black outlines, handle Yellow; all between two White cloud formations outlined Deep Blue; all speed lines Black. Donald Duck, with his fast swinging stride, symbolizes how our squadron accomplishes the periodic maintenance mission with speed, accuracy, and efficiency. His blue cap and jacket are indicative of the fact that the majority of our squadron’s personnel work in fatigues. The tools he carries are equally vital to our mechanical repair work. All adds up to the need for accomplishing the job as quickly as possible to comply

with always existing schedules. (Approved, 11 Jul 1956)

The 6th Periodic Maintenance Squadron emblem is a Walt Disney Productions copyright reproduction which cannot be exploited for commercial purposes. A copyright release was obtained from the Walt Disney Productions in writing 14 February 1956 for the squadron's right of use and reproduction of the emblem design. The copyright release is permanently on file in this Headquarters. (signed J. R. Belgard, Lieutenant Colonel, USAF; Chief, Awards Branch; Personnel Services Division; Directorate of Military Personnel; 19 Apr 1956)

MOTTO

OPERATIONS

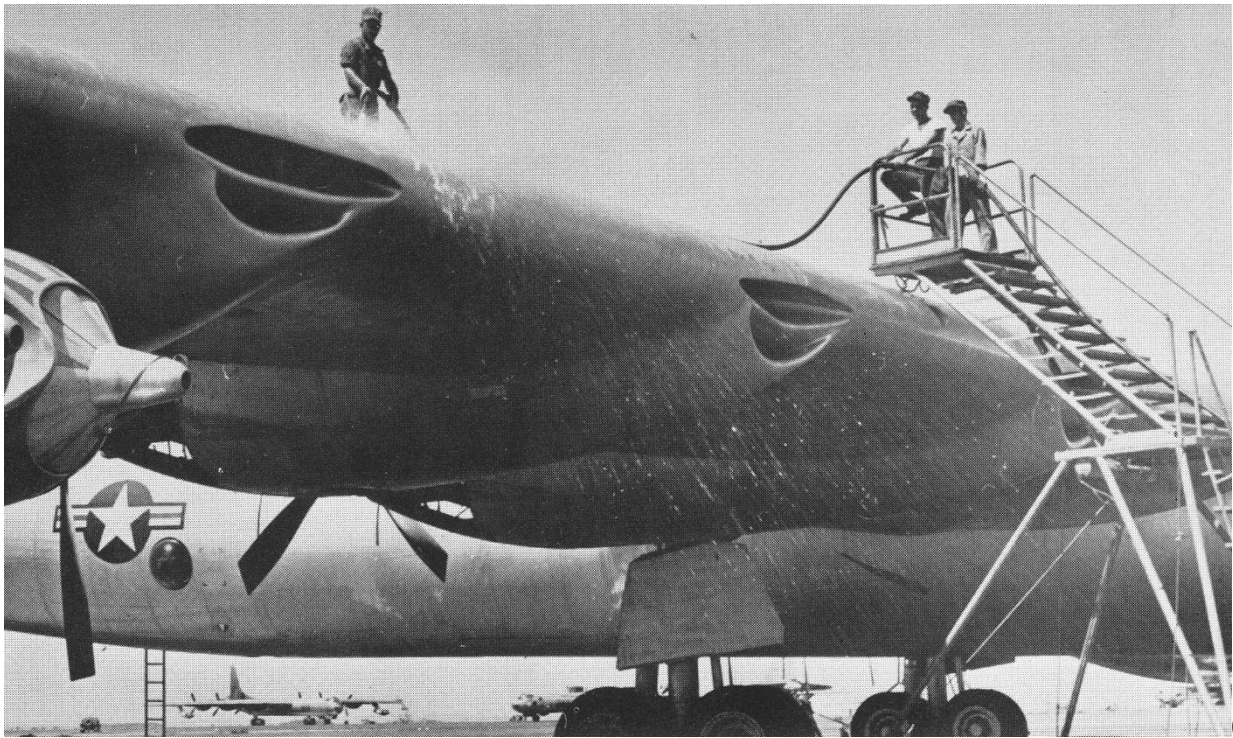


Maj Roy F. Claytor



6

PMS wash rack



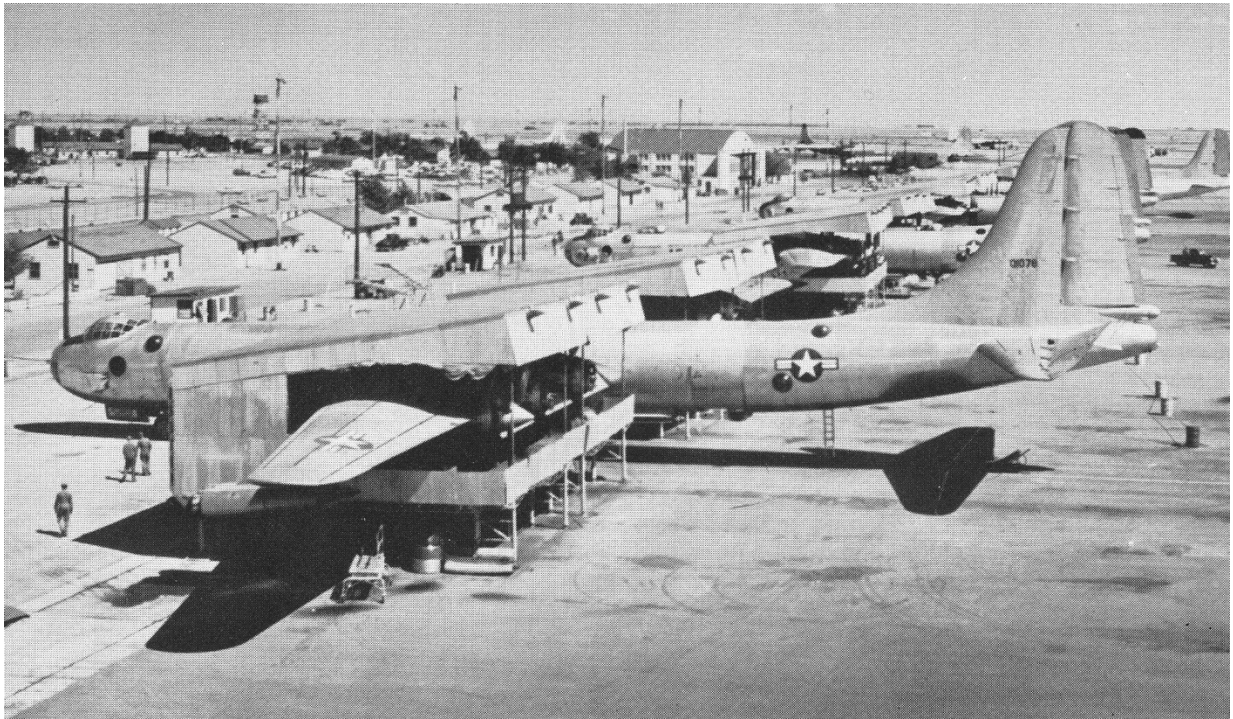
6

PMS Wash Rack—"getting all dolled up."



6

PMS Tail on view of dock.

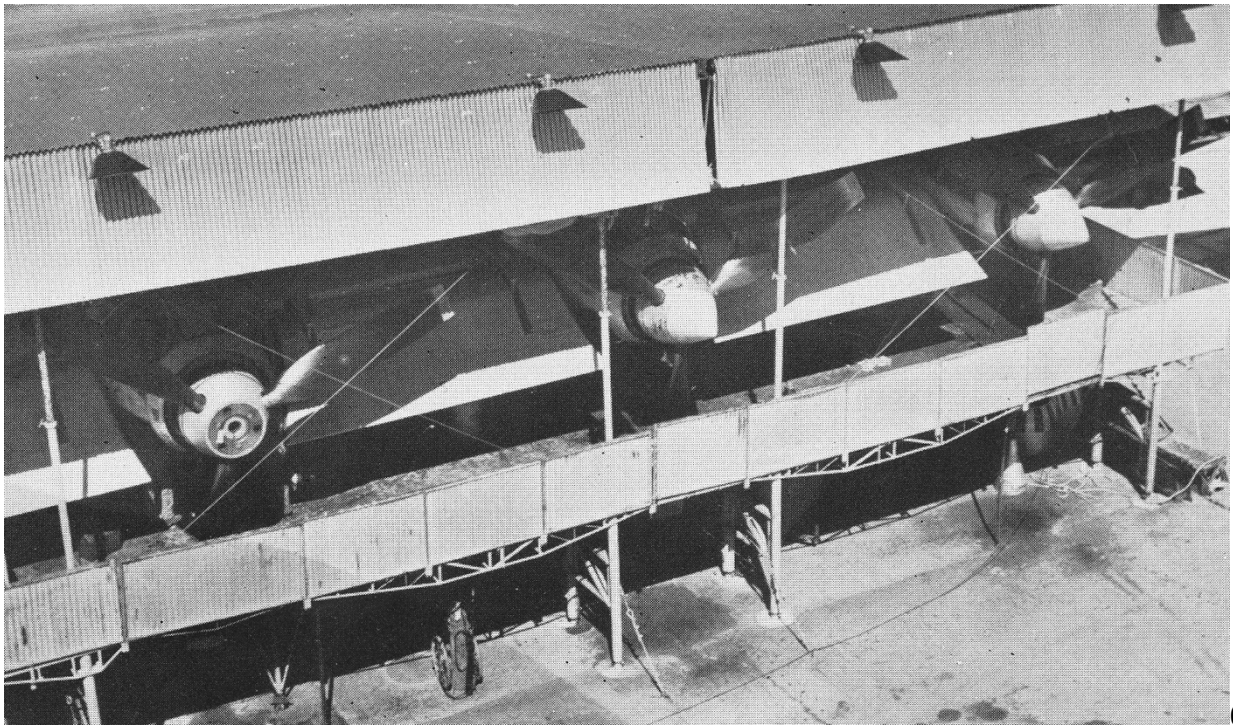


6 PMS dock line.



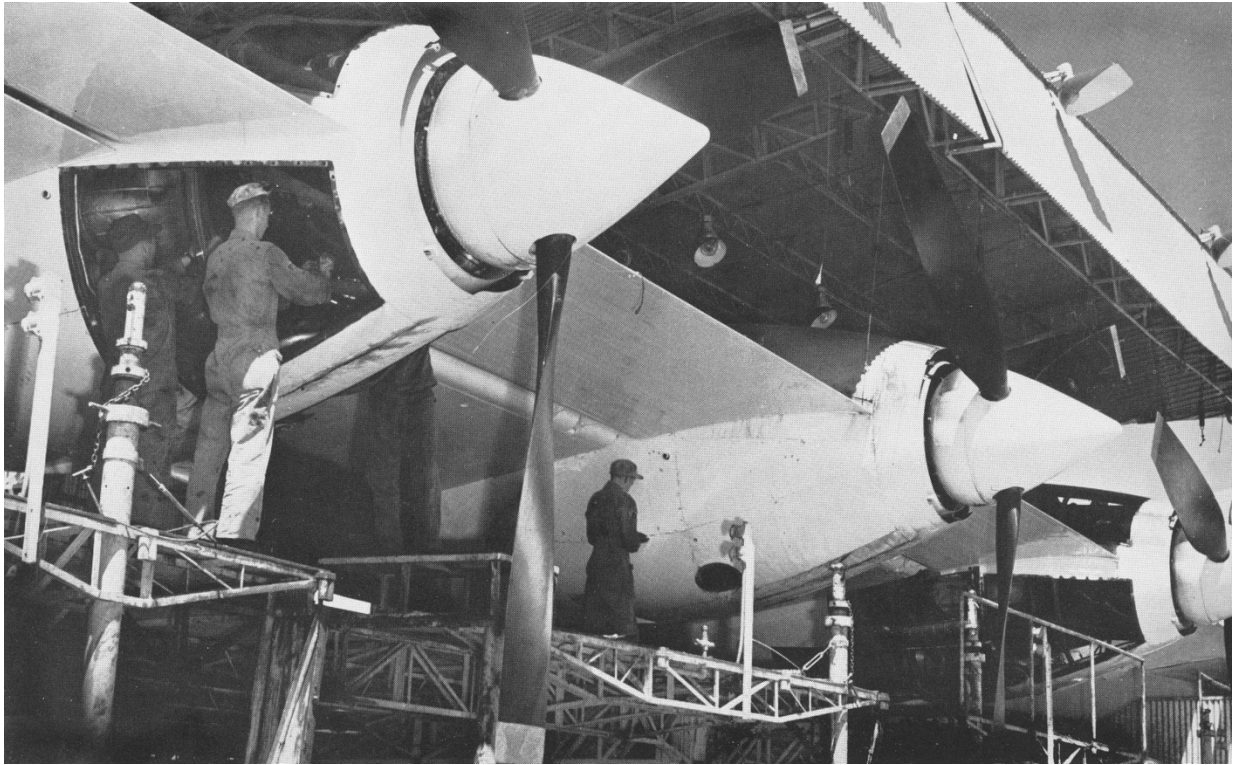
6

PMS ready for inspection.

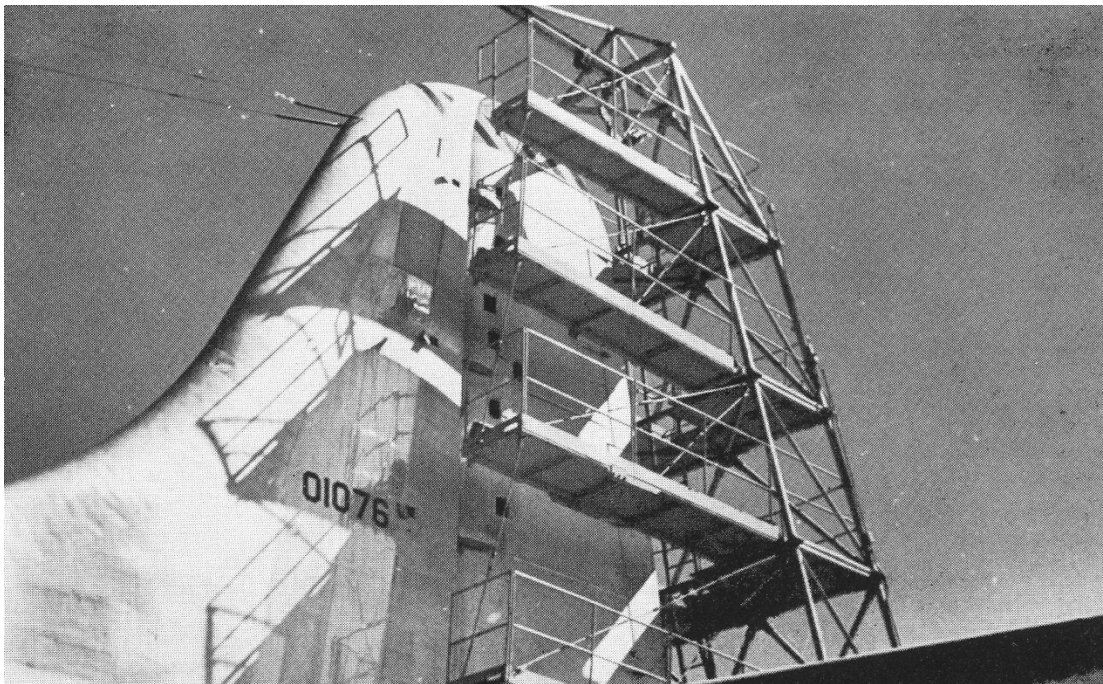


6

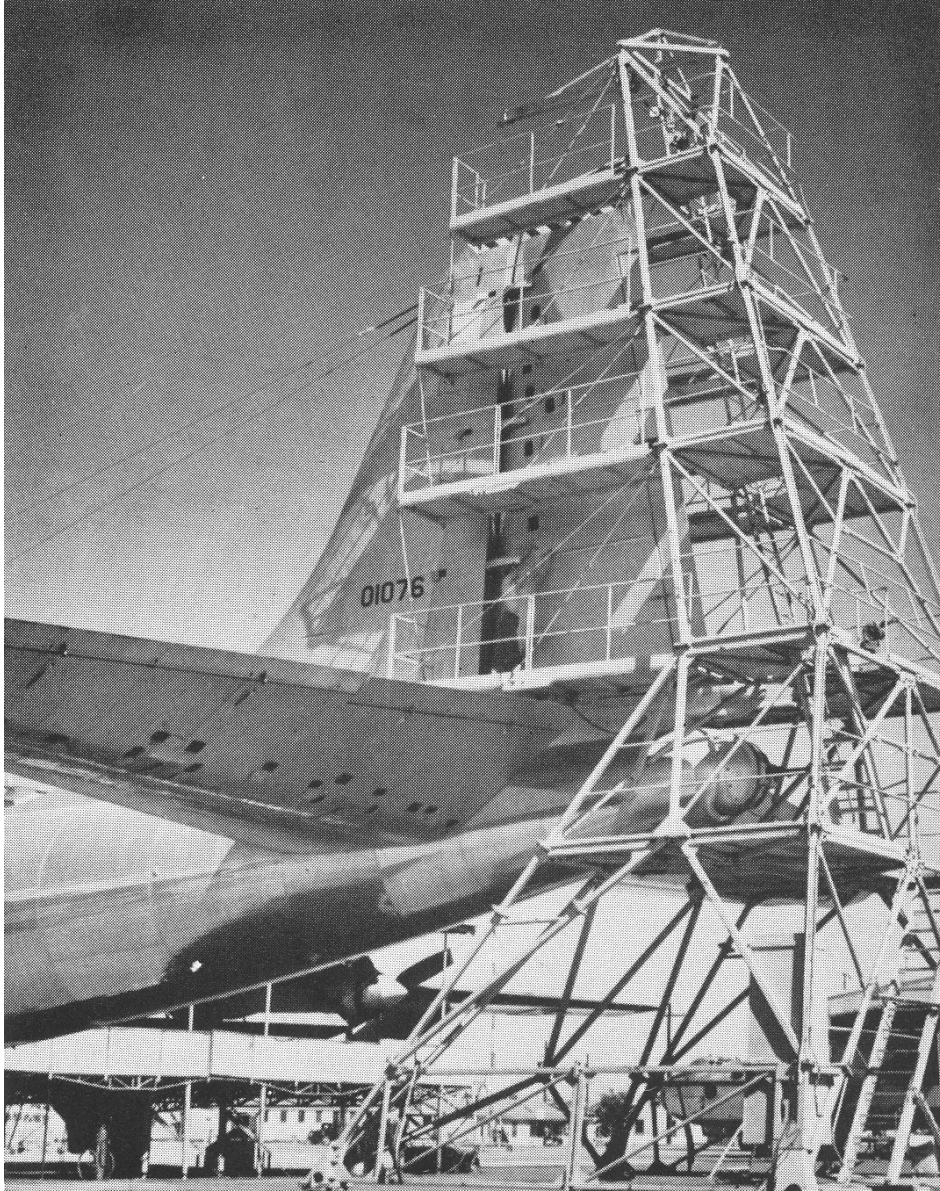
PMS, Out of the heat of the noonday sun.



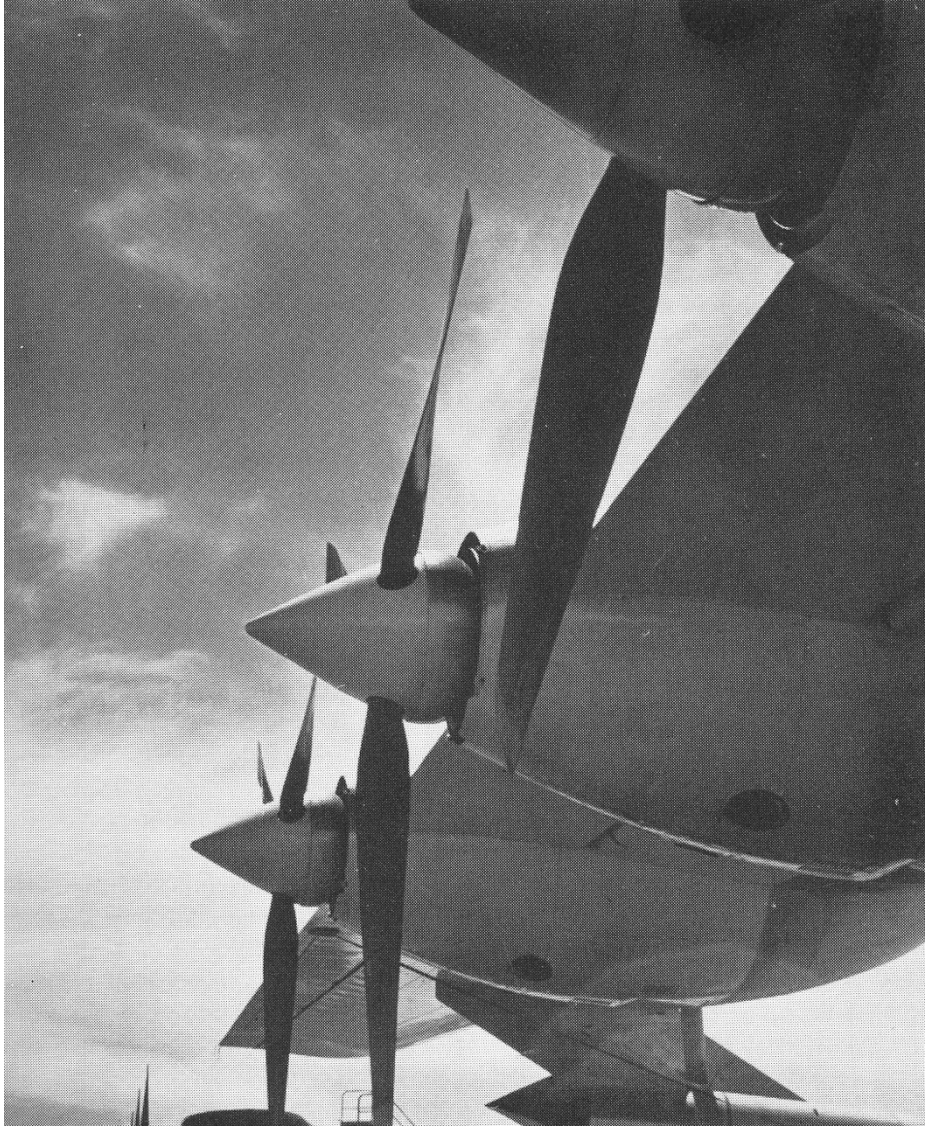
6 PMS pressure check.



6 PMS, Empennage stand in place.



6 PMS Empennage stand in place for tail inspection.



A study in props.

DEPARTMENT OF THE AIR FORCE UNIT HISTORIES

Created: 23 Nov 2010

Updated:

Sources

Air Force Historical Research Agency. U.S. Air Force. Maxwell AFB, AL.

Unit yearbook. *6 Bombardment Wing (H)*. 1954.